

CARCINOMA HEPATOCELULAR DIAGNÓSTICO

Isabel Távora, Afonso Gonçalves
Serviço de Imagiologia Geral

CARCINOMA HEPATOCELULAR DIAGNÓSTICO

INTRODUÇÃO

- 0,5 a 1 milhão de novos casos / ano (5°)
- Em 2010 deve ultrapassar a taxa de mortalidade do cancro do pulmão
- USA – Incidência 1976-1980 (1,4 por milhão)
1991-1995 (2,4 por milhão)

CARCINOMA HEPATOCELULAR DIAGNÓSTICO

- Ecografia (ECO)
- Tomografia Computorizada (TC)
- Ressonância Magnética (RM)

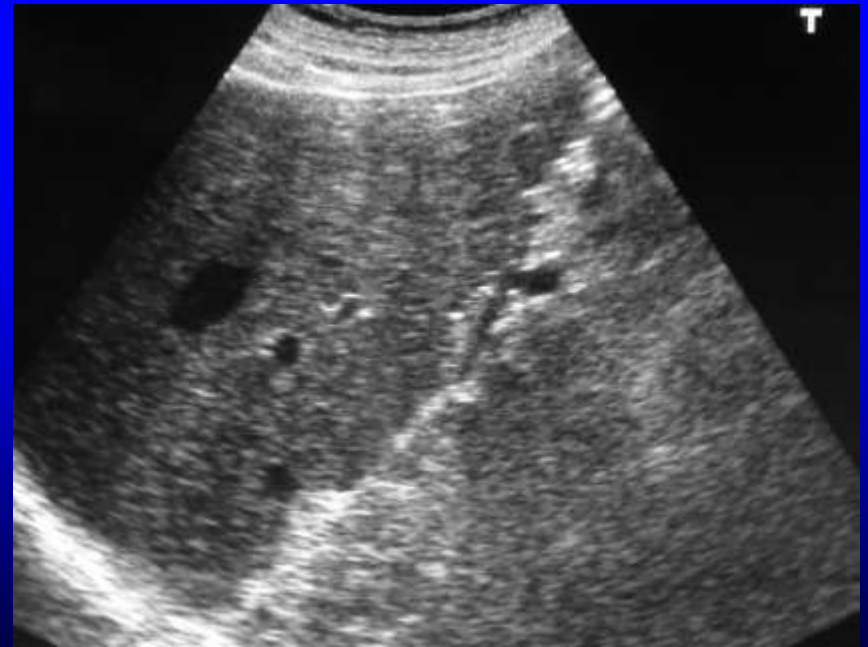
CARCINOMA HEPATOCELULAR DIAGNÓSTICO

ECO

FÍGADO NORMAL



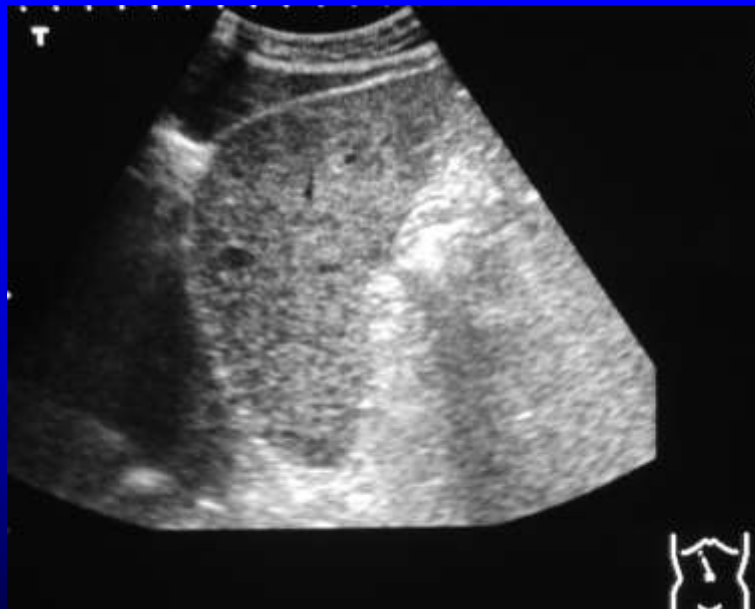
DHC



CARCINOMA HEPATOCELULAR DIAGNÓSTICO

ECO

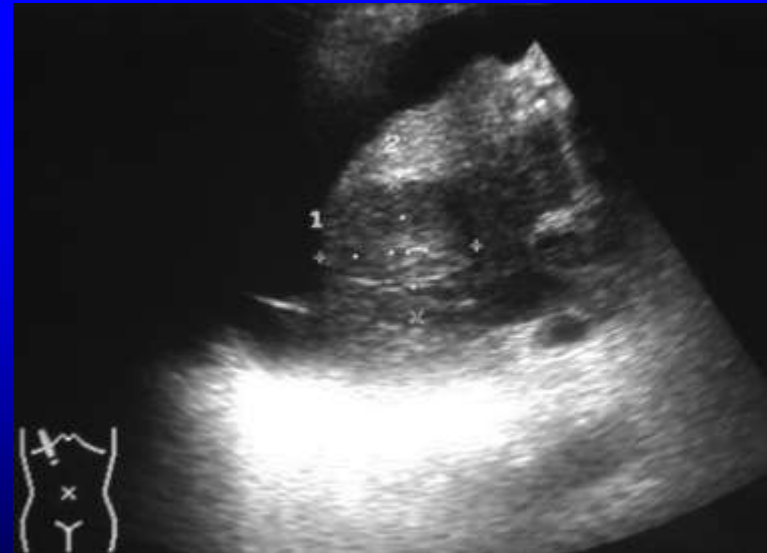
CHC



CARCINOMA HEPATOCELULAR DIAGNÓSTICO

ECO

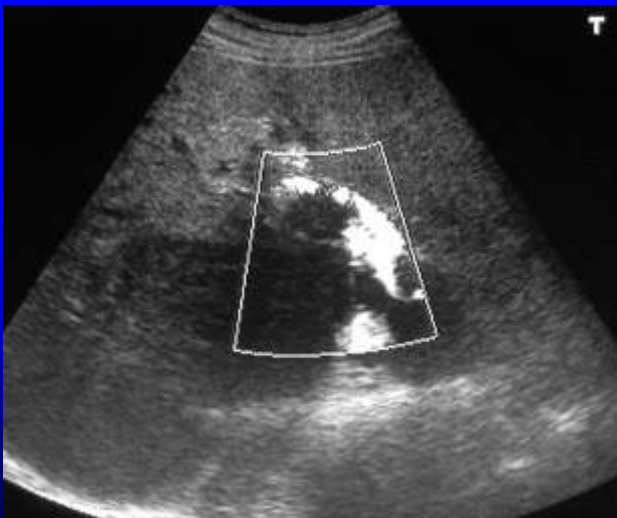
CHC



CARCINOMA HEPATOCELULAR DIAGNÓSTICO

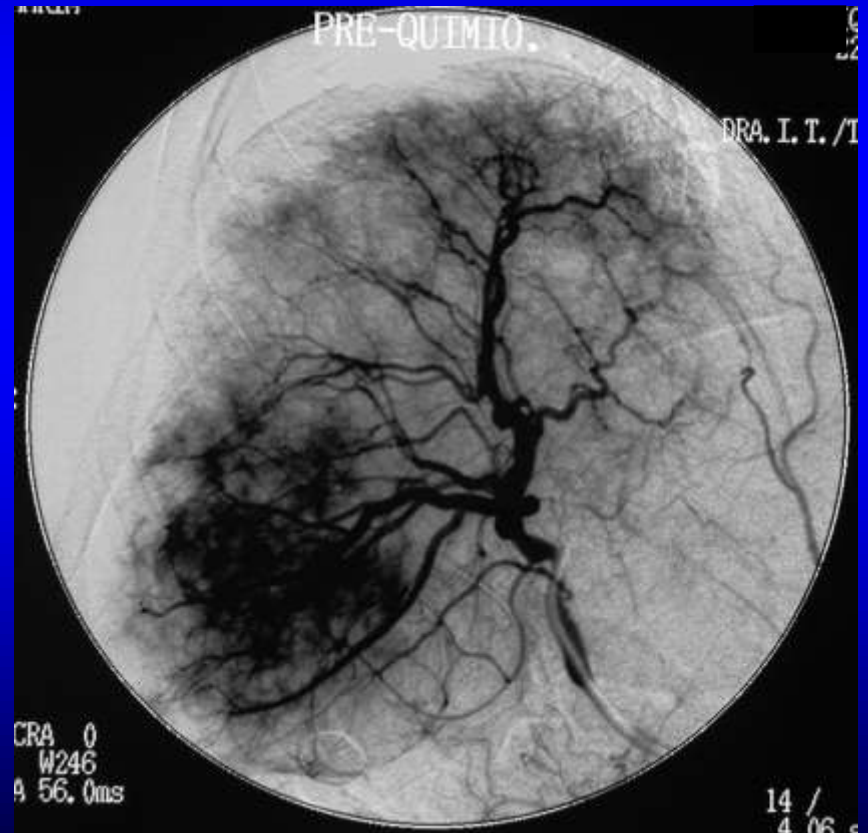
ECO

Trombose da veia porta



CARCINOMA HEPATOCELULAR DIAGNÓSTICO

VASCULARIZAÇÃO

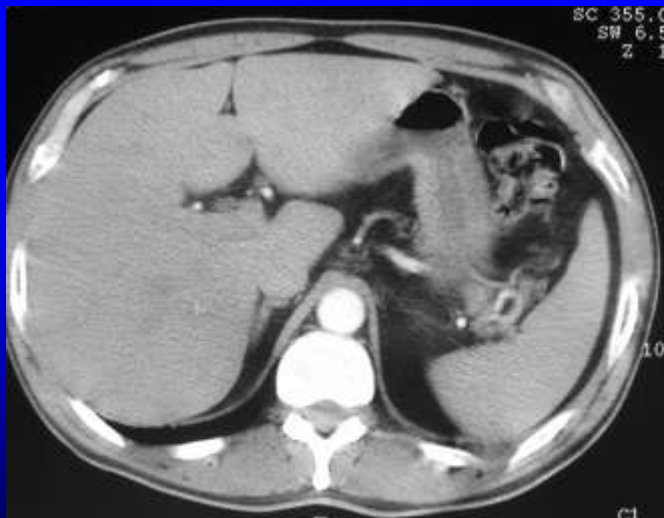


CARCINOMA HEPATOCELULAR DIAGNÓSTICO

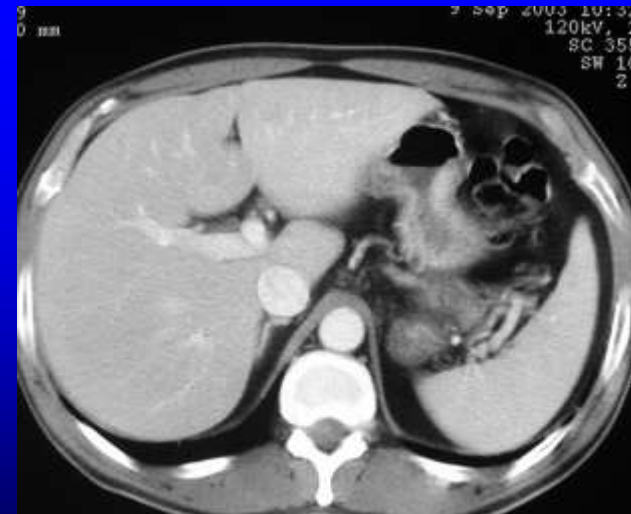
TC

FÍGADO NORMAL

Fase arterial

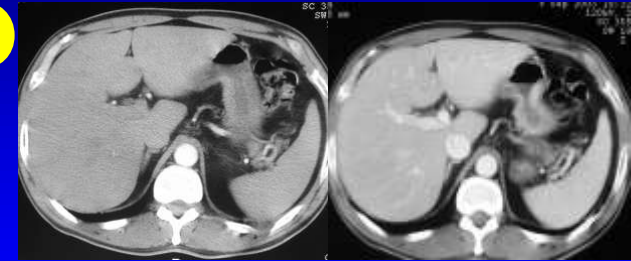


Fase portal



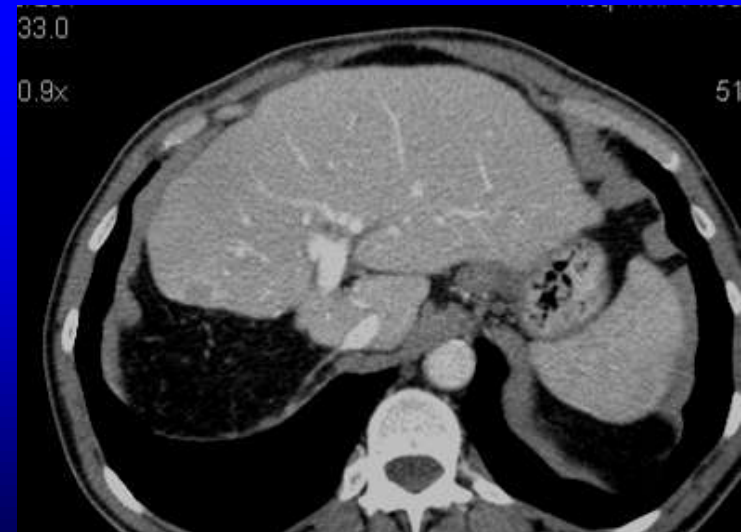
CARCINOMA HEPATOCELULAR DIAGNÓSTICO

TC
CHC



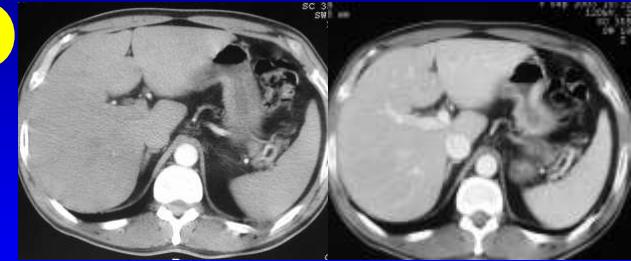
Fase arterial

Fase portal



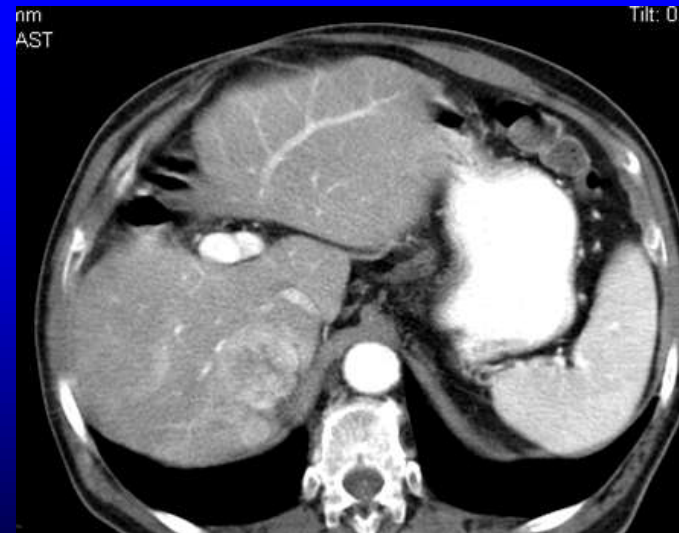
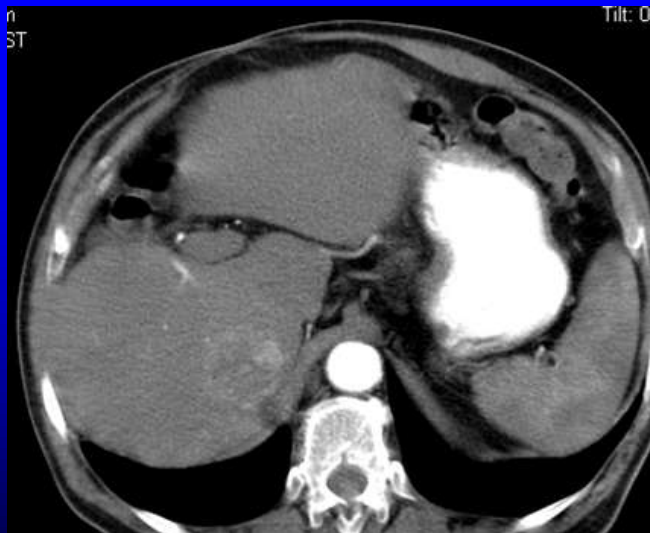
CARCINOMA HEPATOCELULAR DIAGNÓSTICO

TC
CHC



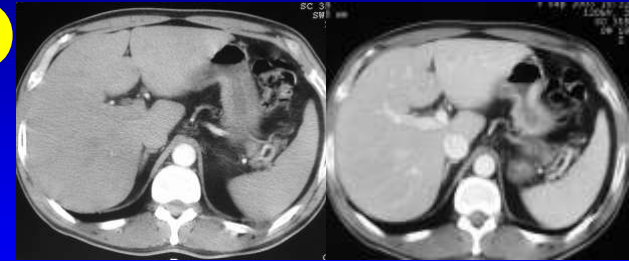
Fase arterial

Fase portal



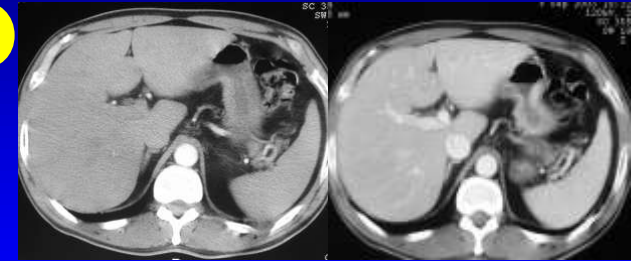
CARCINOMA HEPATOCELULAR DIAGNÓSTICO

TC
CHC



CARCINOMA HEPATOCELULAR DIAGNÓSTICO

TC
CHC

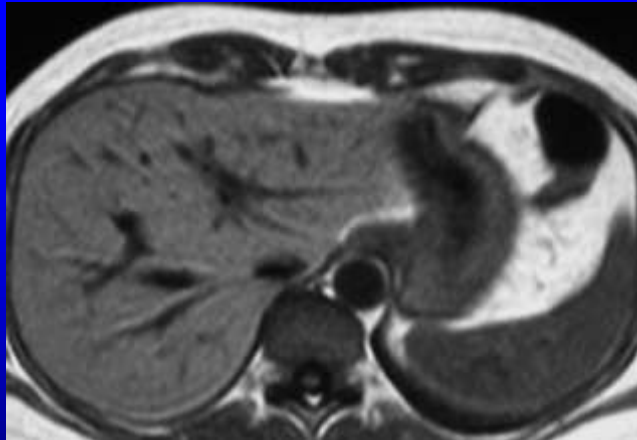


CARCINOMA HEPATOCELULAR DIAGNÓSTICO

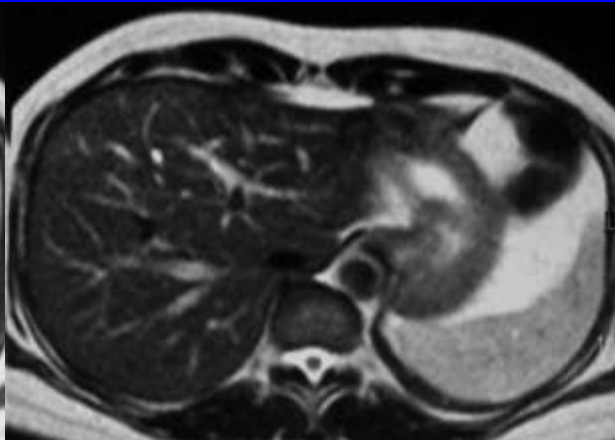
RM

FÍGADO NORMAL

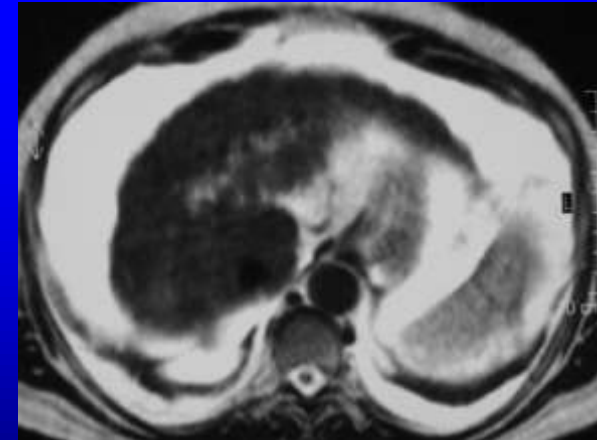
T1



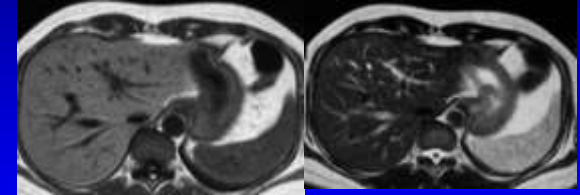
T2



DHC



CARCINOMA HEPATOCELULAR DIAGNÓSTICO



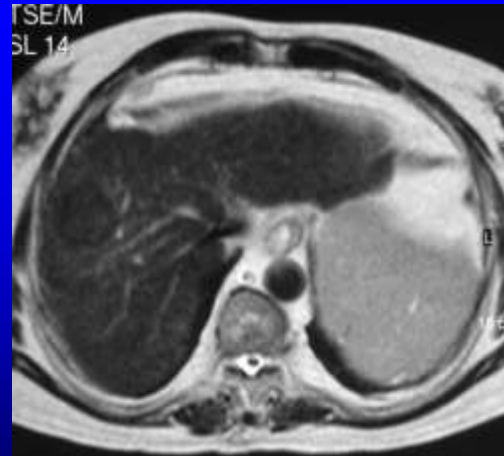
RM

CHC

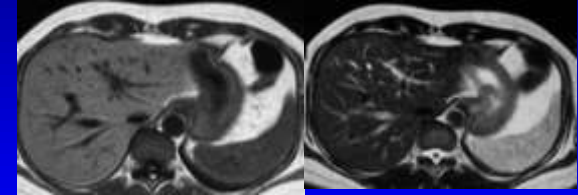
T1

T2

T2 sat. Gordura



CARCINOMA HEPATOCELULAR DIAGNÓSTICO



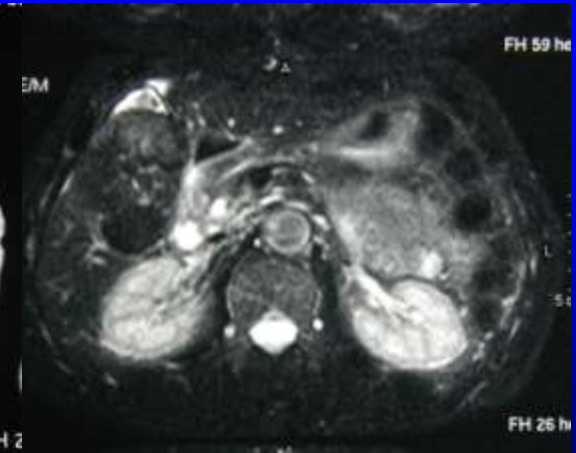
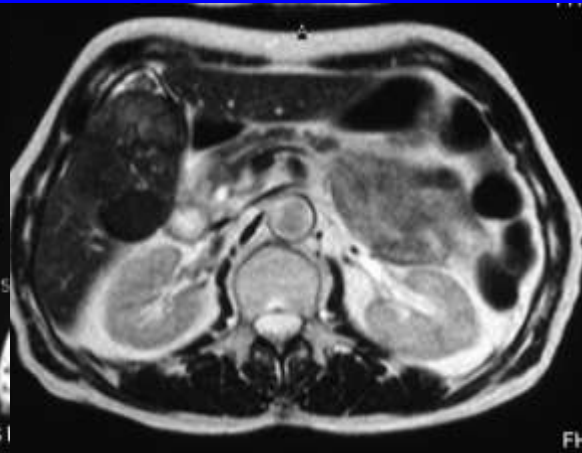
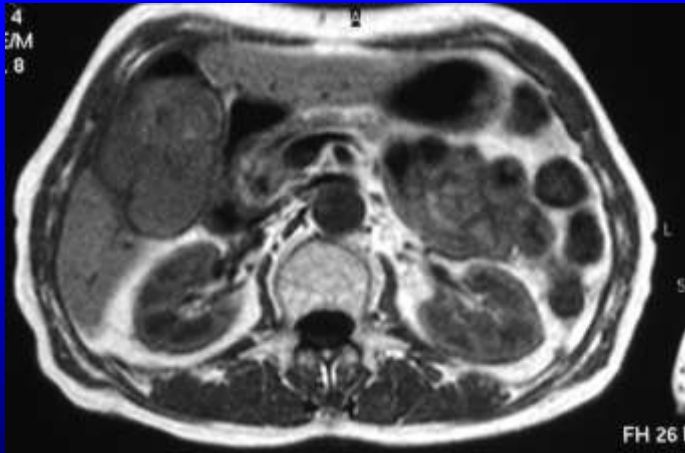
RM

CHC

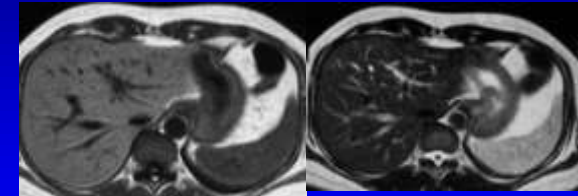
T1

T2

T2 sat. Gordura



CARCINOMA HEPATOCELULAR DIAGNÓSTICO



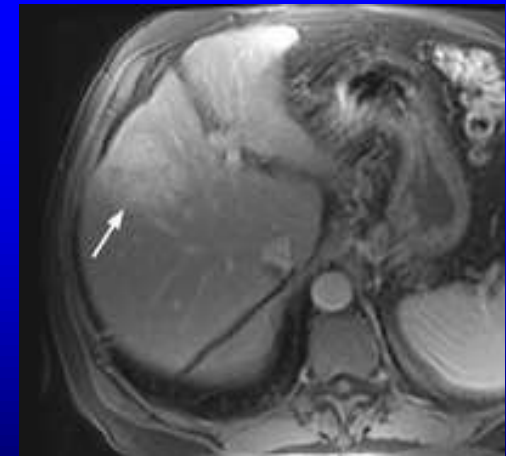
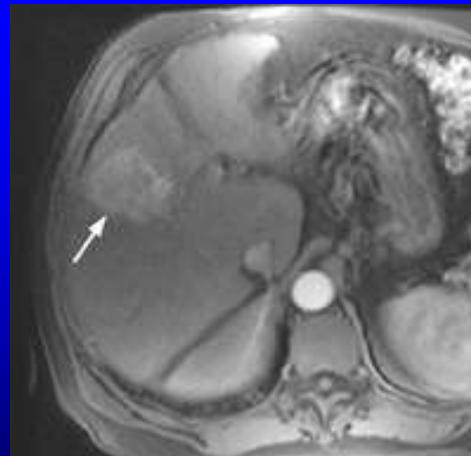
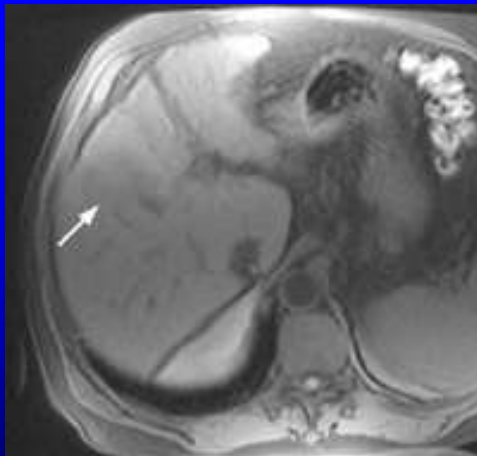
RM

CHC

T1

GAD. - arterial

GAD. - portal



Lutz et al, Hepatocellular carcinoma in cirrhosis: enhancement patterns at dynamic gadolinium- and superparamagnetic iron oxide-enhanced T1-weighted MR imaging. *Radiology* 2005 Nov;237(2):520-8

CARCINOMA HEPATOCELULAR

DIAGNÓSTICO

IMAGIOLOGIA

- Rastreamento / Diagnóstico
- Estadiamento
- Terapêutica
- Seguimento